



Registered Charity No. 1137780

# Melton Mowbray u3a July 2026 Newsletter



Welcome to the July edition of your newsletter. We hope you'll find it both entertaining and informative. Details for sending contributions for future editions can be found on the last page.

## MONTHLY SPEAKER MEETING

We hope you are all having a good summer. In this job you have highs and lows. Having very nearly filled next year's diary we began to relax. Then we had to find a new venue for June, not only suitable for 120 members but 15 Shanty Folk! Which, following the positive response from those who attended, you enjoyed. I have already registered our request for another visit. Apparently, they get so booked up they do not take bookings for the next year until nearer the time. Oh! to be so popular.

Now for the low. I'm sorry to tell you we have been told that Rev'd Sam Dunn (the minister of Melton Mowbray Baptist church) can no longer attend our September meeting as he is taking a sabbatical. We're doing our best to find a replacement and hopefully we'll be able to update you next month.

Our speaker for our next meeting on **Thursday 16<sup>th</sup> July** is Stephen Evens who will be talking about the Great Railway Reunification.

Stephen is the Secretary of the GCR membership organisation, Friends of the Great Central Mail Line, and volunteers on the railway in various roles. The Reunification presentation gives some background about the original railway and how it came into being, also the development of the two halves of the preserved GCR, between Loughborough These heritage railways are 18 miles long in total, being only separated by a 500m gap.

|                   |  |
|-------------------|--|
| <b>Catering</b>   | Gillian Tinsley, Judy Smithers, Marianne Hodson, Dolly Kay |
| <b>Meet/Greet</b> | Collette Marshall, Pauline Posey                           |

| <b>Forthcoming 2026 Program</b> |  |                                       |
|---------------------------------|--|---------------------------------------|
| <b>August 20</b>                | Mike Burton  | The Māori: Great Canoes, Mighty Myths |
| <b>August 21</b>                | 30 <sup>th</sup> Anniversary Garden Party at the Baptist Church<br>2:00pm to 4:00 pm |                                       |
| <b>September 17</b>             | tba  |                                       |
| <b>October 15</b>               | Roger Prescott   | Juke Box Jury                         |

*Coral and Vicki*  
*speakersecretary@u3ameltonmowbray.org.uk*

## **VOLUNTEER(S) REQUIRED**

### **ORGANISER FOR U3A REFRESHMENTS AT MONTHLY MEETINGS**

I am stepping down from being the Organiser for the refreshments at the monthly u3a meetings, so I am hoping that the organisation gets volunteers to undertake this post. I only took it on as there was no one to organise the teas/coffees after we came back from Covid. At that time, the gatherings were very short, as members left as soon as the Speaker had finished and there was very little socialising.

It is not difficult, as it is buying the supplies and encouraging members to be involved in the setting up, serving the drinks and clearing away afterwards. All expenses are paid promptly, as soon as the receipts are handed to the Treasurer. It can be a job-share position, so there is cover throughout the year.

I have the rota covered until the end of the year (I just need one additional person each month) and I will ensure that there are sufficient supplies to cover for the first two months, where appropriate.

My last month will be August 2026, so just contact me if you think that you can help your Club.

There are "Job Descriptions" for both the Organiser and the Volunteers and there is an excellent list of volunteers willing to help. Contact me by email on: [refreshments@u3ameltonmowbray.org.uk](mailto:refreshments@u3ameltonmowbray.org.uk) or via any committee member.

Thank you. Angela Fielding

## COMMITTEE NOTICES

### 30th Anniversary Garden Party – Reminder Closing date for bookings is Friday, 7th August.

#### Booking your place:



To reserve your place, please get in touch with Sharon Baines via email:

[membership@u3ameltonmowbray.org.uk](mailto:membership@u3ameltonmowbray.org.uk) or book at one of the monthly meetings.

Places are limited, so early booking is advised to avoid disappointment.

If you have any **dietary requirements**, please let us know at the time of booking!

**Cost:** The Committee is kindly subsidising this event so that you can enjoy the afternoon.

**The cost per person is: £10.00**

#### Payment options:

- BACS: Please use your **surname, membership number, and “GP”** as the reference.
- Debit card: Available at the monthly meetings.
- Cheque or cash: A £0.40 transaction charge will apply.



Melton Mowbray

### Important Information

#### Progress to date- A Simpler Way to Renew Your Membership

We are pleased to let members know that excellent progress continues to be made towards the launch of our new online membership application and renewal system. The Committee has been working hard to introduce a process that will make applying for membership and renewing subscriptions much easier, quicker, and seamless for everyone.

From now until the launch date, we will be testing all the steps in the process so that it is as seamless as possible for you.

Moving to this online system will not only make life easier for members. Still, it will also help us reduce paperwork, printing, postage, and administration time, allowing more of our time and resources to be used for the benefit of members.

This will become the best and easiest way to apply or renew. Members will be able to complete the process online in just a few simple steps, at a time that suits them, with secure payment by debit card, credit card, or PayPal.

We hope the Beacon membership application and renewal system will launch on **1<sup>st</sup> August 2026**. New members joining from this date will be able to do so online.

We would strongly encourage all members to use the new system wherever possible. It is being introduced to make the process simpler, faster, and more efficient, and for most members, it will be by far the most convenient way to manage membership. To help members get started, support sessions will be available at the end of Monthly Members' Meetings from August onwards, where assistance will be available to help anyone create an account and use the new system with confidence. There will be two parts to moving to online renewals:

1. Create your u3a Beacon account (Instructions will be provided nearer the time)
2. Once your account has been created, after 1<sup>st</sup> November 2026, you will be able to renew your membership.

For the time being, alternative manual methods will still be available for those who need them, including BACS, cheque, or cash at Monthly Members' Meetings. However, we hope that as many members as possible will take advantage of the new online process and the benefits it offers.

This is a positive and important step forward for us, and I am confident it will be a real improvement for members and the Committee alike.

## **Introducing the Digital Friends Team (Formerly Tech Buddies)**



We are delighted to introduce our new Digital Friends Team, created to support members with all things digital. From using the internet more confidently to understanding everyday online tools and services, we aim to provide friendly, practical help that makes navigating today's fast-moving digital world feel easier and less overwhelming. Whether you are looking to build new skills, solve a problem, or gain confidence using technology, we are here to help.

### **Our Aim**

We are here to guide and support you—not to do everything for you. Our goal is to help members become more confident, capable, and independent when using technology.

### **Meet the Team**

The Digital Friends Team currently consists of the following committee members and volunteers:

|                                      |                |
|--------------------------------------|----------------|
| David Ramsden (Chairman)             | Claire Drew    |
| CJ Rupp (IT Administrator)           | Barry Gilcrest |
| Sharon Baines (Membership Secretary) | Steve Gill     |
| Janice Palmer                        | Steve Greedy   |
| Mandy Radford-Collumbell             | Robin Benton   |

### **How We Can Help**

We recognise that much of our u3a communication is now carried out electronically and that information about activities is increasingly shared through our website. Many members may also welcome support in getting more from their phones, tablets, iPads, laptops, or computers.

- ✓ We offer IT help and guidance tailored to your needs, including:
- ✓ Communicating with friends and family

- ✓ Using email and the internet
- ✓ Online shopping and everyday digital services
- ✓ Solving common technology problems
- ✓ Building confidence with your devices
- ✓ Digital Friends Support Desk

A Digital Friends support desk will be available at most monthly meetings, where a member of the team will be happy to discuss any digital issues you may be experiencing.

To help us provide the most appropriate support, we have developed a short Digital Confidence and Needs Questionnaire. This will help us understand your requirements and direct you to the right member of the team. While we may not always be able to resolve issues during the meeting itself, we will offer advice, guidance, or arrange follow-up support where appropriate.

### **What's Outside Our Scope?**

Please note that the team is unable to provide:

- Hardware repairs or fixes for broken devices;
- Installation of paid software or apps;
- Assistance involving banking or other sensitive personal information;
- 24/7 on-call technical support.

### **Getting in Touch**

If you are unable to attend a monthly meeting, you can contact the Digital Friends Team by:

- Email: [digitalfriends@u3ameltonmowbray.org.uk](mailto:digitalfriends@u3ameltonmowbray.org.uk)
- Telephone: 0300 102 4512

You can also visit the Digital Friends page on the u3a website.

Your enquiry will be directed to the most appropriate member of the team, who will be pleased to help.

*Sharon Baines, Membership Secretary*

### **Request from your IT Advisor**

Could you please add [noreply@u3abeacon.org.uk](mailto:noreply@u3abeacon.org.uk) to your list of trusted email addresses? This might be labelled as *contacts* or *address book*. Most email programs will have something like this.

**Why?** This acts as an opt out of spam filtering. Most of our U3A emails will appear to come from this machine address. A spam filter may find reasons to block them, so we get a handful of addresses blocking emails that should go to the whole membership. It would be cleaner, in many ways, if we can avoid this. There's further explanation [here](#).

Thank you for your help. I should have thought of this sooner.

*C. J. Rupp, Local System Administrator for Melton Mowbray u3a  
[admin@u3ameltonmowbray.org.uk](mailto:admin@u3ameltonmowbray.org.uk)*



## GROUP NEWS



### NEW GROUPS NEWS!

#### Groups Started in June

**CALLIGRAPHY** Self-taught and group, members can help each other.  
2pm Tuesday at Tesco. Week TBC.

**DARTS** Any level of player welcome.  
2pm 2<sup>nd</sup> and 4<sup>th</sup> Tuesdays at the Harboro Hotel.

**PLAYING MUSIC FOR FUN** Bring your instrument.  
Springfield Community Centre. Time and date TBC.

**For any of these please email [groups@u3ameltonmowbray.org.uk](mailto:groups@u3ameltonmowbray.org.uk)**

#### New Groups Starting

**ZENTANGLE** Mindful drawing of a type of pattern.  
1<sup>st</sup> Friday 2pm at Wilton Manor.

**CANASTA** A rummy style card game. Would you like to play?  
Time, date and venue TBC.

**For any of these please email [groups@u3ameltonmowbray.org.uk](mailto:groups@u3ameltonmowbray.org.uk)**

THERE WILL BE OTHER GROUPS! If you are interested in a group that is full, I can try to start another one and do email me with any suggestions for new groups. Thank you very much to all group leaders and helpers.

*Dolores Harvey, Groups Co-ordinator  
email: [groups@u3ameltonmowbray.org.uk](mailto:groups@u3ameltonmowbray.org.uk)*



## GROUP NOTICES



### AI EXCHANGE

**2** **5 things AI can help you with today**

- Writing emails**  
Clear, polite and professional
- Planning holidays**  
Ideas, tips and itineraries
- Explaining tricky topics**  
In simple, easy-to-understand words
- Brainstorming ideas**  
For projects, hobbies or fun
- Fixing awkward wording**  
Make it sound just right

*Come explore with us!*

**AI Exchange**

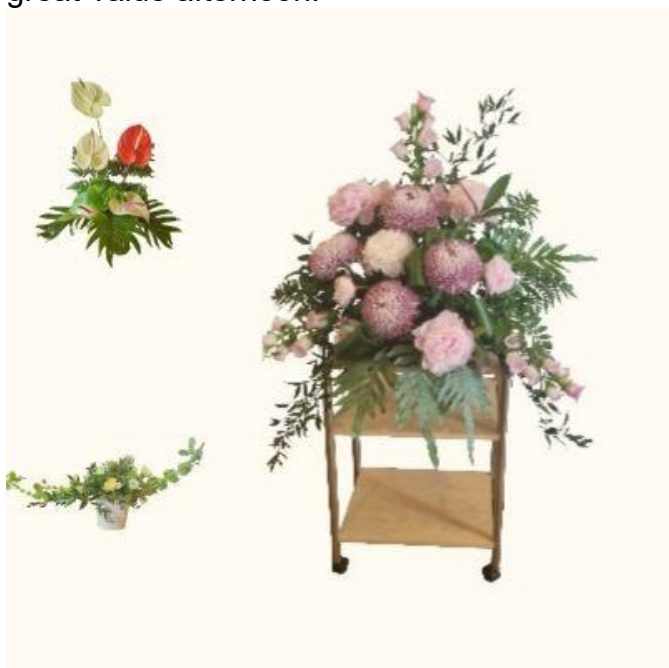
## AFTERNOON DISCO - CANCELLED

Saturday 4<sup>th</sup> July 2026

## FLOWER ARRANGING II

### Spring into Summer Foundation Floral Workshop

A group of ten, a lovely mix of flower arrangers and gardening enthusiasts, enjoyed a superb “Spring into Summer” workshop in early June. Professional florist Chris Fowkes delivered a humorous, engaging and wonderfully informative introduction to floristry, guiding us through the essentials before demonstrating a range of classic design shapes with real flair. The highlight was creating our own step-by-step posy to take home, leaving everyone smiling and proudly comparing results. A fun, creative and great-value afternoon.



*Group leader, Mandy*

## LOCAL HISTORY GROUP

Brian Fare spoke at our last meeting before the summer break on the interesting topic of what Melton Mowbray residents got up to during the Second World War. For instance, there were many calls for towns and cities across Britain to fundraise for anything from tools, guns, and kit, to airplanes and warships. Melton Mowbray and its borough can be justifiably proud to say that it did its bit time and again. During the 1943 “Wings for Victory” week, Melton gained formal recognition for raising £292.597 - enough for seven new Lancaster bombers! Wow!

After a summer break the group will be back on Friday 11<sup>th</sup> September. Look out for further details in the September Newsletter.

In the meantime, we are looking for a couple more people to help run the Group, plus a few regular helpers to set up and clear away the meetings. **We are about to lose one Group Leader, and another will be unavailable for most of the autumn period so we will be desperately short and, as a result, may have to cancel meetings without more help.** If you are interested and would like further details, then please

email your contact details to [localhistory@u3ameltonmowbray.org.uk](mailto:localhistory@u3ameltonmowbray.org.uk) and we will get back to you.

Leaders: Claire Abbott, Debbie Adams, Brian Ellis  
[localhistory@u3ameltonmowbray.org.uk](mailto:localhistory@u3ameltonmowbray.org.uk)

## LUNCH GROUP NEWS

### The Lake Isle, Uppingham 12<sup>th</sup> June 2026

A return visit to The Lake Isle in Uppingham proved every bit as rewarding as the first. Having thoroughly enjoyed last year's lunch, our group of 14 arrived with high expectations, and the restaurant delivered once again with confidence and flair.

Gathered in the light-filled private dining room upstairs, the atmosphere was immediately convivial. Good company, lively conversation and plenty of laughter set the tone for an enjoyable afternoon, while attentive and professional service ensured everything ran seamlessly.

The group explored both the set and à la carte menus, with praise flowing as freely as the conversation. Several diners remarked that the dishes exceeded even their enticing menu descriptions. Presentation throughout was exemplary, each plate arriving beautifully composed and genuinely appetising. As the saying goes, we eat with our eyes first, and The Lake Isle understands this perfectly.

Standout dishes were plentiful. The scallops were described as "absolutely delicious" and proved the highlight of one lunch. The smoked trout starter impressed with its freshness and balance, while the vegetable pithivier showcased a deft hand in the kitchen. Particularly noteworthy was the butternut squash dish, cooked to perfection and offering a medley of textures and flavours that comfortably held its own against any meat-based option.

Desserts maintained the high standard. The lemon and white chocolate delice earned special acclaim, its contrasting flavours and textures providing a memorable finale. Frozen and frosted berries, cherry ripple and mascarpone ice cream added further delight, while coffee accompanied by delicate chocolate bites ensured the meal ended on a high note.

This is a restaurant that combines thoughtful cooking, polished service and a welcoming atmosphere with remarkable consistency. Judging by the enthusiasm around the table, The Lake Isle remains firmly on our revisit list for the foreseeable future.



The Lunch Group meets on the second Friday of each month, and the next outing is to **The George Hotel, Oakham.**

If you are interested in joining us for lunch, contact Mandy on [frilunch@u3ameltonmowbray.org.uk](mailto:frilunch@u3ameltonmowbray.org.uk).

## OUTINGS

### **PLEASE REMEMBER THE CHANGE OF PICK-UP TIMES FOR WENTWORTH WOODHOUSE ON TUESDAY 14<sup>th</sup> JULY**

**9am at Wilton Road; 9.15am at Tesco NOT 8am and 8.15am as originally booked.**

If you have said you are a member of the National Trust, please bring your membership card with you as you will have to show it upon arrival.

### **TRIP TO YORK**

**Wednesday 23rd September**

£30 cash, £30.40 cheque.

Depart Wilton road at 8 am.

Depart Tesco at 8.15 am.

PLEASE GET IN TOUCH IF YOU ARE INTERESTED IN GOING TO THIS LOVELY CITY OR WE MAY HAVE TO CANCEL. It is at least 8 years since we last visited and it is always changing with lots of interesting things to see.

### **WORCESTER CHRISTMAS MARKET (One of the finest)**

**Thursday 3<sup>rd</sup> December**

£30 cash, £30.40 cheque

Depart Wilton road at 8.00am

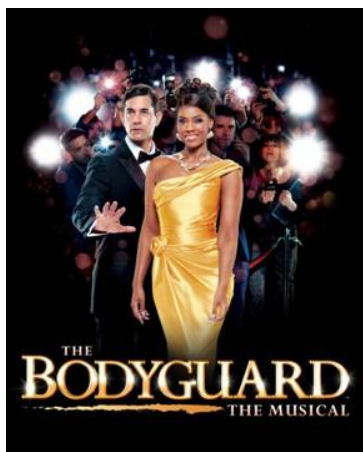
Depart Tesco at 8.15am

If you are interested in any of our trips but can't attend a meeting, please contact JEAN PEARSON for information and how to pay so you don't miss the chance of a nice day out with friendly like-minded people.

*Jean Pearson and Ruth Rigby*  
[outings@u3ameltonmowbray.org.uk](mailto:outings@u3ameltonmowbray.org.uk)

## THEATRE

### **The Bodyguard the Musical**



Our latest theatre trip took us to see *The Bodyguard - The Musical*, and what an unexpectedly brilliant afternoon it turned out to be. Even those who arrived unsure of what they were about to watch, especially members who hadn't seen the original film, left thoroughly delighted by the performance.

For those who *had* seen the film, there was a moment of collective head-scratching. Several confessed they couldn't remember the dramatic scene involving Rachel Marron's sister being stabbed, prompting a few to vow to dig out their old DVDs for a nostalgic re-watch.

The show itself was described as very professional, fabulous, and far better than expected. The lead role was performed by the understudy, whose voice was nothing short of outstanding. In fact, the entire cast delivered vocally - powerful, polished, and worthy of a standing ovation.

One member felt the opening was a little slow, though she admitted she hadn't seen the film before, so the story took a moment to settle in. Once it did, she was fully absorbed.

Reactions to the seating were mixed, a lady on Row Q found the legroom a little tight, while others were perfectly happy with their view and comfort. As always, members commented on how much they enjoyed the performance and the matinee show time.

A thoroughly enjoyable Thursday afternoon, filled with great music, great company, and a show that exceeded expectations. Brilliant seats, brilliant voices, and plenty of conversation for the journey home.

*Mandy, Group Leader*



## WALKING GROUPS



### 2nd MONDAY WALKING GROUP

**Monday 13th July**

**10:15 am for 10:30 am start**

Meet at the "Grey Hound Inn", Burton on the Wolds, LE12 5AG.

Toilets may be available

*Group Co-Ordinator Geoff Harris*

### 3<sup>rd</sup> WEDNESDAY WALKING GROUP

**15 July 2026**

**10:00 am for 10:15 am start**

Meet at the **The Welby Arms, Church St, Denton, Grantham NG32 1LG**

Toilets available and lunch can be pre-booked prior to walking.

The walk will be approx.5 miles on mainly field and track with a small amount of road walking

Lunch is booked for 1.00pm. Menu - <https://www.welbyarms.com/monthly-menu/new>. A sandwich and lunch menu will be available as well as the main menu.

NB: Please let me know **by Monday 13 July** if you are intending to walk and if you will be staying for lunch.

*Terry Hopper (Group leader/Co-ordinator)*

## 1<sup>st</sup> THURSDAY WALKING GROUP

The **Thursday 2nd July, 2026**, walk will be from **Tilton on the Hill village**. Please park on Marefield Lane, LE7 9LA. (As you turn left into the village turn first left again.) Be ready to walk for 10am. No toilets are available. The walk is approximately 6 miles and quite hilly, with lovely views.

We intend stopping for lunch at The Welcome Cafe, Hollands Nurseries, Tilton Road, Twyford, LE14 2HZ. Orders from the menu can be phoned through on the day.

If you intend walking/staying for lunch please let us know by the Monday before, so that we can invite guests if numbers are low.

The **Thursday August 6th, 2026**, walk will be from **Braunston in Rutland**. Please park in the area of Cedar Street near the Blue Ball PH, LE15 8QS. Ready to walk for 10am. Toilets will be accessible.

The undulating walk of approximately 6.5 miles is to Withcote and back, with some moderate hills and good views.

We intend having lunch at the Blue Ball PH. Lunch if required can be ordered prior to walking. You are welcome to join us if you wish.

If you intend walking/staying for lunch please let us know by the Monday before, so that we can invite guests if numbers are low.

*Stuart and Wendy Posnett, Group Leaders  
Email: [walkingthursday1@u3ameltonmowbray.org.uk](mailto:walkingthursday1@u3ameltonmowbray.org.uk)*



## ANNUAL GROUP REPORTS



### German

Our German group has been running for 12 years, and we still have three founder members. In that time, we have progressed from beginners and are now working at level B1. There are currently eight of us. We meet twice a month at Tesco and prepare our chosen pages of text in advance.

The group's numbers are limited by the size of the room but we are happy to offer a taster session to interested members whose German is at our level. We would also be happy to advise any members who wanted to start a new beginners or conversation group.

*Diane Cherryman, James Johnston, joint group leaders  
[german@u3ameltonmowbray.org.uk](mailto:german@u3ameltonmowbray.org.uk)*

### Interfaith and None

The full annual report is available on our website; thanks to everyone for their contributions.

We would welcome a wider range of faiths participating, either joining us as members or guest speakers. Please contact us directly via the webpage.

Our next meeting is Tuesday 22<sup>nd</sup> September at 1430.

*Peter Karran, Group Leader*

## Italian Group

I was asked to provide an annual report for both the Italian Conversation and Italian Beginners groups. It makes sense to combine them. You could view these as one group with two different types of meeting. However, one of these is based around conversation, which requires some knowledge of the language and, also, some confidence in using what you do know. The other one follows a formal course. That is more useful in the early stages. It also requires most of the group to be at a similar stage, in learning the language. Otherwise, some will get bored and some will get left behind. As a result, the membership of the two groups is fairly distinct. It only makes sense to attend both, when the learning group is already quite advanced.

## Italian Beginners

At the beginning of 2026, we reconstituted the learners' group again, as a real beginner's group, starting from scratch. We canvassed for new beginners from before Christmas and at the January, *Meet the Groups* meeting. We had a good response, and we were able to start in the second half of February, with a group of 25 members. This was such an expansion that we had to arrange a new venue. We now meet at The Centre @ Mary's Place, on Burton Road. This used to be called The Samworth Centre. The cost is £24 for a 2hr minimum booking. We meet on the 2<sup>nd</sup> and 4<sup>th</sup> Wednesday mornings between 10am and 11:30. We are following the BBC *Talk Italian* course. This is largely structured around recordings and dialogues, which makes it a good start, if you want to learn Italian for tourist activities. This has been used quite successfully in the past.

## Italian Conversation

The Italian Conversation group has also expanded quite significantly, from several different sources. We managed to convince most of the previous learners' group, who had followed 3 course books over nearly 3 years, that they were probably good enough to try some conversation. We also picked up several members, who moved into the area, and a few others who were already here, but decided to join us. A few years ago, the conversation group was a handful of members. Now, we have a dozen active members on the mailing list. Of course, they don't all turn up for every meeting, particularly at this time of year.

The conversation group meets on 2<sup>nd</sup> and 4<sup>th</sup> Thursday of the month in the Training Room on the 1<sup>st</sup> floor in Tesco on Thorpe Road. That's usually the day after the beginners' group, but occasionally it's not. We usually manage about 1hr of conversation, mainly about what we have done since the last meeting. Occasionally, we throw in something about the state of the world or the process of learning a language. On a good day, we will have enough steam to fill an hour and a half. However, we try to prepare a second activity to fill half an hour to 20mins. This might be very traditional, like reading and translating from a book or an article. Or we could agree to revise a particular area of grammar. However, a crossword in Italian can fill the slot, just as well. This encourages a different way of thinking about Italian words, and we don't do the ones at the easiest level.

You are welcome to join us but be aware that the beginners' group has almost completed their first course book, so they are not so much beginners, as early-stage learners now.

C. J. Rupp, Group Leader for Italian: [italian@u3ameltonmowbray.org.uk](mailto:italian@u3ameltonmowbray.org.uk)

## Latin

We are a small, dedicated group of five members. We meet on the first and third Tuesdays of the month in the library from 11am to midday. Although this is a relatively short meeting, we accomplish quite a lot.

The first half hour is taken up by going over our homework in detail. It takes longer to complete the homework at home than to go over it in the library. The second part of the meeting is used to complete a puzzle in Latin. This is usually a crossword or word search, generally being quite difficult as we have moved from easy to advanced. We have been studying the Cambridge Latin Course and are coming towards the end of it, having about enough remaining to last into 2027. Thereafter, we will probably select a book on Latin literature.

*Jo and Richard Bewell, Group Leaders*

## Line Dancing

The Line Dancing Group continues to meet on a Thursday between 10-11 am in Kirby Bellars Village Hall. The 3rd week of the month it is the same place and time but, on the Wednesday, so members are free to attend the U3A monthly meeting.

Most weeks we welcome between 25-30 people dancing, we learn a new dance every month, some more complicated than others and continue to enjoy rediscovering past classics and older favourites, finishing with a well-earned tea or coffee.

We are a happy and light-hearted group and help each other and the instructor remembering the step sequences!

If you have Line Danced before and know your jazz box from your Monterey but need a little refreshing get in touch and come to see us to decide whether you would like to join us.

*Sue Britton, Group Leader.*

## Line Dancing Beginners

Beginners Line dancing is going really well, we have between 14 and 28 dancers per class and seem to learn a new dance each session, with repeats from the weeks before!

I think everyone has a great time and we enjoy the half time drink (tea/coffee).

*Linda Newbery, Group Leader*

# GET PUZZLING!

## French Quiz

1. What is the name for thinly cut chips?
2. By what name is a long, thin loaf of French bread known?
3. Which book by John Fowles, made into a film in 1981, features the titular character who is often to be found on The Cobb at Lyme Regis staring out to sea?
4. Which is the only Grand Slam tennis tournament to be played on clay?
5. Who played Geraldine Grainger in 'The Vicar of Dibley'?

6. Which 1971 film starring Gene Hackman was about narcotics detectives in pursuit of a French heroin smuggler?
7. Which French city is famous for a type of mustard?
8. The outermost region of the EU is which French overseas department situated on the north coast of South America?
9. What is the name of the varnish for furniture which consists of shellac dissolved in spirit?
10. Into which coiled brass instrument can the player insert their hand to alter the pitch of the sound?

Answers on pages 16

*Kindly provided by Judy Smithers*

---

## JULY MATHS PUZZLE



**A large, varnished cube is cut in to 27 smaller cubes of equal size.**

**What fraction of the surface area of the new cubes has been varnished?**

As we are all of a certain age, you could think of it as a Rubik's cube, with stickers instead of varnish. However, you will have to pretend that there is real cube in the middle.

Solution will be published in the next edition of the newsletter.

*Kindly provided by CJ Rupp  
Maths for Fun Group Leader (among other responsibilities)  
maths@u3ameltonmowbray.org.uk*

## FINAL NOTICES

### Annual Reports due for the August 2026 Newsletter:

- Local History
- Lunch Friday
- Mah Jong 1
- Mah Jong 2
- Maths for Fun
- My Life Story

### Annual Group Reports

The Annual Group Reports item is included to allow group leaders, or group members to provide an overview of the activities they've undertaken with their groups over the year. We have typically gone through the groups list in alphabetical order, but members are welcome to submit a report at any time during the year, particularly if you are a new group and/or have spaces for new members. It also has the effect sometimes of giving other members ideas for groups they could start and that is always welcome.

We do not wish to put any group leader under pressure to write an annual report but merely provide a platform for your group to showcase achievements and talk about what your members have gained from being part of the group.

## At the meeting next month on Thursday 20<sup>th</sup> August 2026

**Speaker:** Mike Burton, “The Māori: Great canoes, Mighty Myths”

**Catering:** Hilda Cox, Mary Needham, Valerie Malloy, Eunice Fletcher, Joan Allen

**Meet and Greet:** Philip Waters, Shirley Harris

| <b>COMMITTEE</b>   |                                    |                                    |
|--|------------------------------------|------------------------------------|
| Chairman   | David Ramsden                      | chairman@u3ameltonmowbray.org.uk   |
| Vice-Chairman  | Sue Gowans                         | vchair@u3ameltonmowbray.org.uk     |
| Business Secretary   | Carol Thompson                     | secretary@u3ameltonmowbray.org.uk  |
| Groups Co-ordinator  | Dolores Harvey                     | groups@u3ameltonmowbray.org.uk     |
| Treasurer  | Linda Newbery                      | treasurer@u3ameltonmowbray.org.uk  |
| Membership Secretary   | Sharon Baines                      | membership@u3ameltonmowbray.org.uk |
| Speaker Secretary  | Victoria Reynolds/ Coral Batchelor | speaker@u3ameltonmowbray.org.uk    |
| IT Advisor   | CJ Rupp                            | admin@u3ameltonmowbray.org.uk      |
| Newsletter Editor  | Claire Abbott                      | editor@u3ameltonmowbray.org.uk     |
| <b>SOCIAL MEDIA</b>  |                                    |                                    |
| <p><b>Publicity</b> – use this email to spread the word about u3aMM activities - social_media@u3ameltonmowbray.org.uk.</p> <p><b>Let’s Go ... Together</b><br/>           This is a group of WhatsApp users who share with other members their upcoming activities, inviting others to come along. You either post your desired activity or answer someone else’s post to fill your days or evenings. If you would like to be included on this WhatsApp group, please contact membership@u3ameltonmowbray.org.uk. It's a fantastic way of connecting members and building a connected community. If you join but subsequently decide it's not for you, you can always leave the group but please give it a go.</p> |                                    |                                    |
| <b>GENERAL ENQUIRIES</b>   |                                    |                                    |
| <p>General telephone number 0300 102 4512<br/>           Website: melton-mowbray.u3asite.uk</p>  |                                    |                                    |

Your committee is here to help keep Melton Mowbray u3a running smoothly and efficiently. Committee members are always keen to receive feedback on our u3a and encourage members to contact us with any issues, thoughts, suggestions on how we can keep it thriving.

# GET PUZZLING! ANSWERS

## Answers to French Quiz

1. French fries
  2. Baguette
  3. The French Lieutenant's Woman
  4. French Open
  5. Dawn French
  6. The French Connection
  7. Dijon
  8. French Guiana
  9. French polish
  10. French horn
- 

## Solution to June's Maths Puzzle

Every digit of a positive whole number is either 3 or 4 with each occurring at least once. The number is divisible by both 3 and 4.

What is the smallest possible number?

What do we know?

- The target number must be even, because it's divisible by 4, so the last digit must be a 4.
- The sum of the digits in the target must be divisible by 3, because the whole number must be divisible by 3.
- To minimise the value of the number small digits must precede larger ones.

How can we meet those constraints? If you want a number consisting of just 3s and 4s to be divisible by 3, you need at least 3 4s. If you start with a sum of digits that adds up to 4 or 8 and keep adding just 3s, you will never get a number with a sum of digits divisible by 3. So, you have to start with 3 4s, adding up to 12. After that, any 3s that you add will keep the sum divisible by 3. To get a minimum value, select 1 3, because you have to have 1. The result will be: **3444**.

We just used the tests for divisibility by 2 and 3 and the order, in which numbers are written.

*C. J. Rupp, Maths for Fun Group Leader (among other responsibilities)  
maths@u3ameltonmowbray.org.uk*

---

**Thank you** to everyone who contributed to this month's newsletter.

**NEWSLETTER CONTRIBUTIONS:** Please send by **25<sup>th</sup>** of each month to Claire Abbott, editor@u3ameltonmowbray.org.uk. It would be much appreciated if you did **not** leave it until the last minute.