



Registered Charity No. 1137780

# Melton Mowbray u3a June 2026 Newsletter



Welcome to the June edition of your newsletter. We hope you'll find it both entertaining and informative. Details for sending contributions for future editions can be found on the last page.

## MONTHLY SPEAKER MEETING

### PLEASE NOTE CHANGE OF VENUE FOR THE 18<sup>TH</sup> JUNE 2026 MEETING

As announced at the May monthly meeting, the Baptist Church is not available for our June meeting due to building works.

Consequently, this meeting will now be taking place at the **Melton Theatre in the bar area**. Some of our normal services may have to be restricted and full details will be confirmed via email, but we can currently confirm the following:

**Date/Time:** Thursday 18th June, normal time.

**Venue:** Melton Theatre, Asfordby Road, Melton Mowbray, Leicestershire. LE13 0HJ. In the bar area.

**Entertainment:** The Shanty Folk

**Refreshments:** The usual tea/coffee facilities will be available.

**Parking:** The theatre has some parking which we can use, on a first come basis. Access to the car park is on Asfordby road, between the theatre and the Samworth building.

**Please pass this information on if you know anyone who might not get to see the newsletter or receive email communications.**

<b>Catering</b>	Eunice Fletcher, Barbara Cresswell, Julie McCaw, Janet Tomaszewski, Linda Middleton
<b>Meet/Greet</b>	Geraldine Green, Linda Roberts

<b>Forthcoming 2026 Program</b>		
<b>July 16</b>	Stephen Evens,	Great Railway Reunification
<b>August 20</b>	Mike Burton	The Māori: Great Canoes, Mighty Myths
<b>August 21</b>	30 <sup>th</sup> Anniversary Garden Party at the Baptist Church 2:00pm to 4:00 pm	
<b>September 17</b>	Sam Dunn	From Pantomime Dame to Minister

*Coral and Vicki*  
*speakersecretary@u3amemiltonmowbray.org.uk*

## COMMITTEE NOTICES

**THANK  
YOU**

Firstly, we would like to thank those kind members who have donated Gazebos to our u3a (David and Elaine Hinds, Christine and Steve Bluett).

We would also like to extend yet another heartfelt thank you to everyone who supported the Committee during the 1940s weekend on the stall in Wilton Park on 9<sup>th</sup> and 10<sup>th</sup> May. It is very much appreciated. Your time and enthusiasm were clearly evident; we wouldn't be able do these events without your help!



It was a beautiful weekend, even though a little chillier on Sunday. The event was another great success and well worth doing. There was plenty of interest from visitors both near and far, and the enthusiasm shown was really encouraging; we even signed up new members and made lots of contacts on the day.



Events like these continue to be a wonderful opportunity to raise awareness and build connections, and we hope it inspires more people to come along and get involved.



## Remember to book your place for the garden party!

**Friday 21st August, from 2:00 pm to 4:00 pm at the Baptist Church.**

To reserve your place, please get in touch with Sharon Baines via email:

membership@u3ameltonmowbray.org.uk from 6th May or book at one of the monthly meetings.

Places are limited, so please book early to avoid disappointment. Closing date for bookings is Friday, 7th August.

If you have any dietary requirements, please let us know at the time of booking!

The cost per person is: £10.00.

### Payment options:

- BACS: Please use your surname, membership number, and "GP" as the reference.
- Debit card: Available at the monthly meetings.
- Cheque or cash: A £0.40 transaction charge will apply.

We very much look forward to celebrating this special milestone with you.



## GROUP NEWS



### NEW GROUPS NEWS!

#### Groups Started in May

**ART APPRECIATION** 2pm on 4<sup>th</sup> Monday Polish Club. Members are full of great ideas. Please email [artappreciation@u3ameltonmowbray.org.uk](mailto:artappreciation@u3ameltonmowbray.org.uk)

**CROSS STITCH** 2pm on 3<sup>rd</sup> Monday at Wilton Manor. A beautiful venue. Please email [crossstitch@u3ameltonmowbray.org.uk](mailto:crossstitch@u3ameltonmowbray.org.uk)

#### Groups Starting in June

**CALLIGRAPHY** This will be self-taught and group members can help each other Time and Place TBC. Please email [groups@u3ameltonmowbray.org.uk](mailto:groups@u3ameltonmowbray.org.uk)

**PLAYING MUSIC FOR FUN** Bring your instrument. Springfield Community Centre. Time and date TBC. Please email [groups@u3ameltonmowbray.org.uk](mailto:groups@u3ameltonmowbray.org.uk)

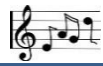
**ZENTANGLE** *Whatever is this?* Mindful drawing of patterns with the option to paint them too.

Time and Place TBC. Please email [groups@u3ameltonmowbray.org.uk](mailto:groups@u3ameltonmowbray.org.uk)

THERE WILL BE OTHER GROUPS! If you are interested in a group that is full, I can try to start another one and do email me with any suggestions for new groups.

Thank you very much to all group leaders and helpers.

*Dolores Harvey, Groups Co-ordinator*  
email: [groups@u3ameltonmowbray.org.uk](mailto:groups@u3ameltonmowbray.org.uk)



## GROUP NOTICES



### ADD TO PLAYLIST - PODCAST RECOMMENDATIONS

As the news can be quite grim at the moment, I thought I'd suggest a light-hearted podcast to start with this month.

My friend Kate suggested **Gyles Brandreth's Rosebud podcast**. She says it always cheers her up - [www.rosebudpodcast.co.uk](http://www.rosebudpodcast.co.uk).

I thought we could also celebrate the man of the moment with the **Guardian's scientific podcast celebrating David Attenborough's one hundredth birthday** [www.theguardian.com/science/audio/2026/may/07/100-years-on-earth-celebrating-david-attenborough-birthday-podcast](http://www.theguardian.com/science/audio/2026/may/07/100-years-on-earth-celebrating-david-attenborough-birthday-podcast).

And another man of the moment - King Charles - and an analysis of the King's speech from the BBC's **"When it hits the fan"** (back catalogue of 146 shows) [www.bbc.co.uk/sounds](http://www.bbc.co.uk/sounds).

And finally, some **Radical Thinking with Amol Rajan** another BBC Sounds - 207 episodes - [www.bbc.co.uk/sounds](http://www.bbc.co.uk/sounds)

Please don't hesitate to suggest podcasts that you like and I'll include them in future emails or online.

Happy listening.

*Penny Tomie, [podcasts@u3ameltonmowbray.org.uk](mailto:podcasts@u3ameltonmowbray.org.uk)*

---

### AI EXCHANGE

**1**

## Curious about AI?

*You're not alone!*

Join our friendly **AI Exchange** group and explore simple, useful tools together.

- ✓ Friendly community
- ✓ No pressure
- ✓ Learn at your own pace

**AI Exchange** *Curiosity today, confidence tomorrow.* ❤️

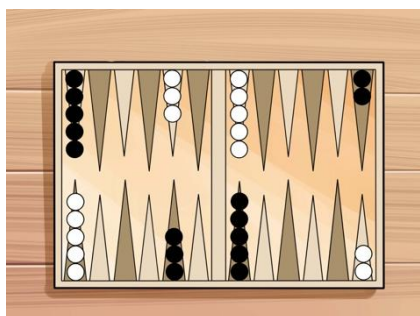
## AFTERNOON DISCO

**Saturday 4th July 2026**  
**2pm-5pm**  
**The Polish Catholic Club**  
**119 Sandy Lane**  
**Melton Mowbray**  
**LE13 0AW**

£10pp in advance only. Tickets may be purchased from Dolores Harvey at the U3A Monthly Meetings Groups table or Halina Coates at [disco@u3ameltonmowbray.org.uk](mailto:disco@u3ameltonmowbray.org.uk).

---

## BACKGAMMON



Backgammon is a two-player board game, played with counters and dice on table boards. Each player has 15 checkers (used to be called men) and the objective is to move the checkers around the board and be first to “bear off” i.e. remove them from the board. This is achieved via a combination of dice scores and strategic judgement.

The basic game is scored without the use of a doubling cube. More advanced games use the cube to raise the points won (or in professional games raises the monetary stakes).

The rules of Backgammon are best learned by playing and you need no or little game experience to get cracking, enjoy the experience and progress at your own speed. The great attraction to the game is that a beginner can quite easily win against more experienced players, so never feeling excluded.

If you are interested, then please pop in to see us at Tesco training room on the 2<sup>nd</sup> and 4<sup>th</sup> Monday of each month at 10.30am –12.30pm. Tesco provide the room free of charge and therefore there is no cost linked to attending.

The training room is accessed via Customer Services, to sign in and be directed to the rear of the store and up the stairs. The Thorpe Road store, post code LE13 1SQ, has plenty of free parking and obviously an opportunity to do some shopping! If you require further information, please feel free to contact Peter Bailey.

---

## BUS PASS

The Bus Pass group recently visited Nottingham and the City of Caves, and they all found the visit entertaining and instructive.

There have been 1000 caves discovered (so far) under Nottingham City (numbers still rising). Some date back to 900 AD. They have been used for multiple purposes, for example homes (build your own), business (tanneries, pubs, accountants, safe storage etc) meeting grounds for revolutionaries, air raid shelters and more.

*George Robinson*

---

## CAR & TRANSPORT GROUP

This group of like-minded transport enthusiasts are looking to enjoy Britain's rich and diverse transport culture - while enjoying fun social events and trips. Currently, with about 22 members, there is a program of trips and events arranged for most of 2026 in relation to Automotive (Car museums, Classic Car Shows, even auctions). Aviation (Newark Air Museum; Cranwell Aviation Heritage Museum; RAF Museum Cosford, etc); and Trains (National Railway Museum York; Great Central Railway etc.).

Recently, the Group have enjoyed trips to The Great British Car Journey (car museum near Belper, Derbyshire), Historic Car Racing (VSCC) at Silverstone. Trips on Flying Scotsman are planned for May, as well as a narrow boat trip and a visit to Newark Air Museum in June. Other activities (involving cars, planes, trains mainly) are being actively arranged.

The group meet monthly on 1<sup>st</sup> Wednesday of the month at The Harboro Hotel 2-4pm (Burton Street Melton Mowbray LE13 1AF).

For further information - contact Edwin.

---

## FLOWER ARRANGING 2

### Mastering the Long and Low



There are moments when a room quietly transforms into a garden, and this session was one of them.

The newly formed Flower Arranging II Group gathered with armfuls of blooms and a generous tangle of foliage, ready to shape something both elegant and expressive. Under the thoughtful guidance of Lisa and Cath, the group turned their attention to the art of the long and low table arrangement; a style that whispers rather than shouts, designed to flow gracefully along a table without ever interrupting conversation or sightlines.

The process began with the foundation: a foam block, carefully prepared and brought to life with a rich tapestry of greenery. conifer, tree ivy, choisya, photinia red robin, rosemary, eucalyptus, laurel, and fatsia leaves were layered with intention, creating a lush, structured base - like building a forest floor before the flowers take their stage.

From there, the arrangements began to find their voices. Bold chrysanthemums and striking alliums took centre stage as focal flowers, while a supporting cast of roses, carnations, gypsophila, and additional chrysanthemums added softness, texture, and rhythm. Each participant followed the same framework, yet no two designs were alike. Some arrangements stretched elegantly like a quiet landscape; others danced with bursts of colour and movement. It was a reminder that floristry lives somewhere between technique and intuition.

What emerged across the room was a collection of stunning, individual interpretations, each one a small, living sculpture.

There was laughter, concentration, the occasional stem reconsidered and repositioned and, ultimately, a shared sense of achievement. The group didn't just learn a new style - they mastered it.

We now look forward to the next creative chapter on 28th May, when Julie will lead the group in a session inspired by supermarket flowers, proof that beauty can be found (and crafted) anywhere with the right eye and a little imagination.

Until then, may your tables be long, your arrangements low, and your creativity always in bloom.

*Group leader, Mandy*

---

## **LOCAL HISTORY GROUP**

Our May meeting was a great success with the ever-popular Jed Jaggard giving us an account of that famous incident when the Marquis of Waterford and his drunken friends "Painted the Town Red" and so popularised the phrase in this country,

For our June meeting, we welcome back **BRIAN FARE** who will talk about:

### **MELTON MOWBRAY IN WORLD WAR TWO**

on

**Friday 12<sup>th</sup> June at 2.00 pm**

at

**Mary's Place (top of Burton Street next to The Crown public house)**

During WW2 Melton was home to several Battalions of the Parachute Regiment and the Remount Depot was training horses and dogs for the army. There was also RAF Melton Mowbray, and the Home Guard. Whilst all this was going on, what did the civilian population of Melton get up to?

Entry is £3 per person (cash only please), and we strongly recommend that you pre-book your place(s) for the meeting as soon as possible by contacting us on [localhistory@u3ameltonmowbray.org.uk](mailto:localhistory@u3ameltonmowbray.org.uk) giving your name and u3a membership number. We can then contact you in the event of a change/cancellation of the meeting, and it gives us an important guide as to the number attending so that we can set up the room accordingly.

**Additional help** is sought for setting up and clearing away the chairs at each meeting (many thanks to Christine and Owen who helped us in May). If you are willing and able to help, then do please let us know via the email above. Thanking you in advance.

Leaders: Claire Abbott, Debbie Adams, Geraldine Deverson, Brian Ellis  
[localhistory@u3ameltonmowbray.org.uk](mailto:localhistory@u3ameltonmowbray.org.uk)

## LUNCH GROUP NEWS

### From the Culinary Trenches of The Old Pheasant

May's lunch at The Old Pheasant began in cheerful style,  
With thirteen diners dressed to smile.  
The pub looked charming, warm and bright,  
And hopes for lunch were running high as a kite.

Alas, the kitchen lost its way,  
With many chosen dishes "off" that day.  
"No goat's cheese left." "No mushrooms too."  
"One lonely pie... but not for you!"

Our waitress, though, deserves great praise,  
She handled chaos through the haze.  
With cheerful smiles and patient grace,  
She truly was the saving face.

The lasagne came both dry and small,  
One lonely layer feeding all.  
The garlic bread could well replace  
A patio tile in strength and grace.

One fish was mainly batter coat,  
The cod itself a passing note.  
The steak pie held more air than meat,  
Though salty chips were quite the treat.

The curry sauce was full of flavour,  
But chicken made a brief appearance later.  
One prawn cocktail looked rather grand,  
Though lettuce tough as boot leather planned.

Desserts redeemed the meal a touch,  
The cheesecake praised very much.  
Hot custard earned approving chatter,  
Though crumble coverage scarcely mattered.

The ladies' loo caused mild alarm,  
Its missing lock devoid of charm.  
Though thankfully no tragic scene  
Occurred mid-perch behind the screen.

Yet through it all the laughs were flowing,  
Good company kept spirits glowing.  
Not every lunch becomes a star,  
And every chef has days bizarre.

So thanks again to Mandy dear,  
For gathering friends with such good cheer.  
We may not rush back there to dine...  
But the banter was absolutely fine!

The Lunch Group meets on the second Friday of each month, and the next outing is to  
**The Lake Isle restaurant in Uppingham.**

Contact Mandy at [lunchfri@u3ameltonmowbray.org.uk](mailto:lunchfri@u3ameltonmowbray.org.uk).

---

## OUTINGS

**PLEASE NOTE CHANGE OF PICKUP TIME FOR WENTWORTH WOODHOUSE ON TUESDAY 14<sup>th</sup> JULY.**

DEPART WILTON ROAD: 9:00am **NOT** 8:00am

DEPART TESCO: 9.15am **NOT** 8.15am

This is due to a request from the venue.

LIST NOW CLOSED.

### Trip to York

Wednesday 23<sup>rd</sup> September

£30 cash/£30.40p cheque.

Depart Wilton Road: 08.00 am

Depart Tesco: 08:15am

Although we are only in June, our Christmas market trip to Worcester is proving very popular. We are told it is one of the best.

### Worcester Christmas Market

Thursday 3<sup>rd</sup> December

£30 cash/£30.40p cheque.

Depart Wilton Road: 08:00am

Depart Tesco: 08:15.

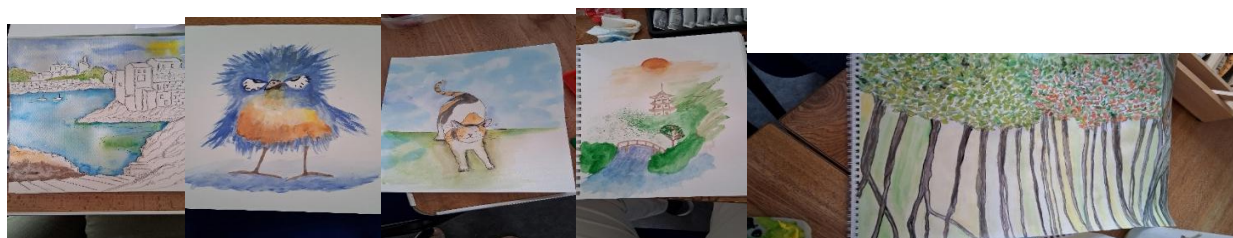
If you are interested in any of our trips but are unable to attend the meetings, please contact Jean Pearson for information and how to pay so you don't miss the chance of a nice day out.

*Jean Pearson and Ruth Rigby*  
[outings@u3ameltonmowbray.org.uk](mailto:outings@u3ameltonmowbray.org.uk)

---

## PAINTING

Show casing some pictures from the talented members of the Painting group.



## POETRY 3

The very talented members of the Poetry 3 group have provided a section of poems to be published in the newsletter over the coming months and below is penned by member, Diana Patterson.

### On teaching English to Overseas Students

It's very hard to learn this English.  
For French, Italian, and the Spanish  
It is a true abomination  
to get through its pronunciation  
Bomb tomb and comb are an example  
As our cough, bough and through,  
Plural nouns are a disaster  
They're so difficult to master  
Ox oxen fish and fish goose and geese  
dice and die, Mouse and mice  
Where does a regulation lie?  
Add to that most Latin words  
Cactus cacti Datum data theses thesis  
You must realise how hard this is  
Then there's American pronunciation  
Tomato tomato potato potato  
Makes you feel sheer frustration  
How can you give an explanation?

---

## STROLLING 4



Another relaxing stroll, this time around the Eye Kettleby Lakes followed by a catch-up, drinks and cake in the Tearooms. Although the stroll was cut short by a heavy shower everyone enjoyed the exercise and fresh air.

*Halina Coates, Group Leader*



## WALKING GROUPS



### 2nd MONDAY WALKING GROUP

**Monday 8<sup>th</sup> June**

**10:15 am for 10:30 am start**

Meet at Wymondham Windmill. LE14 2BU.

Walk Leader: Steve Greedy

*Group Co-ordinator Geoff Harris.*

## 3<sup>rd</sup> WEDNESDAY WALKING GROUP

17 June 2026

10:00 am for a 10:15 am start

Meet at the The Tollemache Arms, 48 Main St, Buckminster, Grantham NG33 5SA.

Toilets available and lunch can be pre-booked prior to walking. View the menu at: <https://tollemache-arms.co.uk/menus>. Lunch is booked for 1.00pm.

The walk will be approx.6 miles on mainly field and track.

NB/ Please let me know by Monday 15 June if you intend to walk and if you will be staying for lunch.

*Terry Hopper (Group leader/Co-ordinator).*

---

## 1<sup>st</sup> THURSDAY WALKING GROUP

The **Thursday 4th June 2026**, walk will be from the Queens Head PH, 20 Church St, Billesdon, Leicester LE7 9AE. Please park in the pub car park and be ready to walk for 10am. Toilets will be accessible.

Lunch can be ordered prior to walking. If you intend walking/staying for lunch, please let us know by the Monday before so guests can be included if numbers are low. The walk of about 6 miles is to Illston on the Hill, Rolleston and back to Billesdon. The walk is undulating with pleasant views.

The **Thursday 2nd July 2026**, walk will be from Tilton on the Hill village. Please park on Marefield Lane, LE7 9LA. (As you turn left into the village turn first left again.) Be ready to walk for 10am. No toilets are available.

The walk is approximately 6 miles and quite hilly, with lovely views. We intend stopping for lunch at The Welcome Cafe, Hollands Nurseries, Tilton Road, Twyford, LE14 2HZ. Orders from the menu can be phoned through on the day. If you intend walking/staying for lunch please let us know by the Monday before, so that we can invite guests if numbers are low.

*Stuart and Wendy Posnett, Group Leaders*  
*Email: [walkingthursday1@u3ameltonmowbray.org.uk](mailto:walkingthursday1@u3ameltonmowbray.org.uk)*



## ANNUAL GROUP REPORTS



### French Conversation – Voyages en Fauteuil

Our French conversation group - Voyages en Fauteuil - has grown from an initial group of four of us just over a year ago to a full group of ten now!

We meet once a month and talk in French about our travels and travel plans, our latest news and anything else that springs to mind.

The group is informal, lighthearted and very friendly. We enjoy our monthly conversations and help each other out with tricky French vocabulary and grammar as required. We are definitely all Francophiles, enjoying learning about France and French culture.

Our major obstacle has been finding somewhere quiet and comfortable to meet. We've tried various options over the last year, some much more successful than others.

Our conversations last for about an hour and a half and we take it in turns to lead a discussion. As the style is informal it's difficult to say whether our French is improving but I think it's fair to say the conversation flows pretty well these days so our confidence and friendship are blossoming in the spirit of U3A!

Penny Tomie, Group Leader

---

## **Gardening**

The group has now been established for a couple of years and has 34 members with around 25 regular attendees at the monthly meetings. The joint group leaders are Jessie Harris, David Ramsden and David Slack.

The group meets once a month, on the third Monday of the month at 2pm, with the meetings normally around two hours in length. The group currently meets at the Sandy Lane Methodist church in Melton.

The ethos of the garden group continues to be informal discussions, shared help and advice with, for each meeting:

- What to do in the garden that month;
- Help between each other with advice on any gardening issues and problems;
- Plant and seed swaps;
- Conservation topics;
- During the summer months a member will sometimes offer to host the meeting in their garden;
- The occasional visit to a garden centre or other gardening event will be organised;
- From time to time a speaker will be arranged to give a talk to the group.

In the past year the Group visited Norwell Nursery, near Newark, a few members went to the Rutland Flower Show and later in the year we visited a member's garden. In November there was a talk, 'Gardening That Doesn't Cost the Earth' and in December we had the Group Christmas Lunch. Recently, members have visited Floral Media, again near Newark. In addition, members regularly share photos of their own trips to gardens whilst to inspire the group in garden planting and design!

There is a yearly charge of £15 to cover venue costs etc. The additional cost of a speaker will be charged separately to cover the cost of a particular speaker. A WhatsApp group has been set up for Garden Group members and is now used not just to advise on forthcoming meetings and events but also by members sharing pictures of their own visits to gardens and their recent experiences and advice.

## **Guitar Classical**

The group has been going now for several months and has two new members. We continue to meet every Thursday evening at the United Reformed Church in Chapel Street, Melton Mowbray which offers comfortable accommodation and near-by parking. We practice between 7.30 – 8.30 pm. We have room for new members and anyone interested in joining us will be made most welcome.

## **Practice and Performance Guitar**

The Group has once again had a very successful year. There are some 20 members and we have had a busy time performing at a variety of events including the u3a Christmas show. Later in the year we will be performing at a concert in St James' Church, Burton Lazars with the u3a Silvertones choir and will be entertaining residents at several local care homes and community groups.

*David Coxhead, Group Leader*

# **LOCAL INTEREST**

## **St Bartholomew's Welby LE14 3JL**

### ***More Tea Vicar?***

Serving cream teas on

**Saturday 4<sup>th</sup> July from 10 am to 1 pm**

*Please join us to celebrate the British summer!*

---

## **Great BIG Green Week**

**6<sup>th</sup> to 14<sup>th</sup> June 2026**

### **Showcase of local community groups**

**St Mary's Church, Burton Road**

**Saturday 6<sup>th</sup> June 10 am to 4 pm**

Come and hear from local groups in our community that are working on conservation, reuse and recycling, community energy and climate justice. Each group will have an area to showcase what they are up to and a representative that you can speak to.

### **A photographic walk through a Temperate Rainforest**

**The Centre @ Mary's Place, room 4, 8 Burton Road**

**Saturday 6<sup>th</sup> June 7pm to 9 pm**

---

### **The Longest Yarn II : Britain at War**

**Peterborough Cathedral**

**Monday 8<sup>th</sup> June to Sunday 14<sup>th</sup> June 2026**

This exhibition features 80 intricately crafted panels of "wool art" each 1m in length, telling the story of life in Britain during WWII. More information and to book your tickets via [www.The Longest Yarn II: Britain at War at Peterborough Cathedral event tickets from TicketSource](http://www.TheLongestYarnII:BritainatWaratPeterboroughCathedral.eventticketsfromTicketSource)

## GET PUZZLING!

### Sleep Quiz

1. What is Donald Trump's unflattering nickname for Joe Biden?
2. A repetition of which letter is often used to denote sleep in cartoons?
3. Who was the Greek god of sleep (also a brand of mattress)?
4. Which diminutive British male dancer, director, choreographer and actor was born in 1948?
5. According to Washington Irving's story, for how long did Rip van Winkle sleep?
6. What is somnambulism?
7. What is an informal name for a speed bump on a road?
8. What name is used for a short sleep (20 minutes or less) intended to quickly revitalise the sleeper?
9. For how long did Sleeping Beauty sleep before being awakened by a handsome prince?
10. What type of soothing song is sung to infants to get them to sleep?

Answers on page 16

*Kindly provided by Judy Smithers*

---

### JUNE MATHS PUZZLE

Here's another short and pithy puzzle for June:

**Every digit of a positive whole number is either 3 or 4 with each occurring at least once. The number is divisible by both 3 and 4.**

**What is the smallest possible number?**

Solution will be published in the next edition of the newsletter.

*Kindly provided by CJ Rupp*

*Maths for Fun Group Leader (among other responsibilities)*

*maths@u3ameltonmowbray.org.uk*

## FINAL NOTICES

### Annual Reports due for the July 2026 Newsletter:

- Interfaith and None
- Italian Beginners
- Italian Conversation
- Latin
- Line Dancing
- Line Dancing Beginners

### Annual Group Reports

The Annual Group Reports item is included to allow group leaders, or group members to provide an overview of the activities they've undertaken with their groups over the year. We have typically gone through the groups list in alphabetical order, but

members are welcome to submit a report at any time during the year, particularly if you are a new group and/or have spaces for new members. It also has the effect sometimes of giving other members ideas for groups they could start and that is always welcome.

We do not wish to put any group leader under pressure to write an annual report but merely provide a platform for your group to showcase achievements and talk about what your members have gained from being part of the group.

## At the meeting next month on Thursday 16 July 2026

**Speaker:** Stephens Evens on the Great Railway Reunification.

**Catering:** Gillian Tinsley, Judy Smithers, Linda Needham, Marianne Hodson, Joan Allen

**Meet and Greet:** Collette Marshall, Pauline Posey

<b>COMMITTEE</b>		
Chairman	David Ramsden	chairman@u3ameltonmowbray.org.uk
Vice-Chairman	Sue Gowans	vchair@u3ameltonmowbray.org.uk
Business Secretary	Carol Thompson	secretary@u3ameltonmowbray.org.uk
Groups Co-ordinator	Dolores Harvey	groups@u3ameltonmowbray.org.uk
Treasurer	Linda Newbery	treasurer@u3ameltonmowbray.org.uk
Membership Secretary	Sharon Baines	membership@u3ameltonmowbray.org.uk
Speaker Secretary	Victoria Reynolds/ Coral Batchelor	speaker@u3ameltonmowbray.org.uk
IT Advisor	CJ Rupp	admin@u3ameltonmowbray.org.uk
Newsletter Editor	Claire Abbott	editor@u3ameltonmowbray.org.uk
<b>SOCIAL MEDIA</b>		
<p><b>Publicity</b> – use this email to spread the word about u3aMM activities - social_media@u3ameltonmowbray.org.uk.</p> <p><b>Let's Go ... Together</b>            This is a group of WhatsApp users who share with other members their upcoming activities, inviting others to come along. You either post your desired activity or answer someone else's post to fill your days or evenings. If you would like to be included on this WhatsApp group, please contact membership@u3ameltonmowbray.org.uk. It's a fantastic way of connecting members and building a connected community. If you join but subsequently decide its not for you, you can always leave the group but please give it a go.</p>		
<b>GENERAL ENQUIRIES</b>		
General telephone number 0300 102 4512 Website: melton-mowbray.u3asite.uk		

Your committee is here to help keep Melton Mowbray u3a running smoothly and efficiently. Committee members are always keen to receive feedback on our u3a and encourage members to contact us with any issues, thoughts, suggestions on how we can keep it thriving.

## GET PUZZLING! ANSWERS

### Answers to Sleep Quiz

1. Sleepy Joe Biden
2. Z
3. Hypnos
4. Wayne Sleep
5. 10 years
6. Sleep walking
7. Sleeping policeman
8. Power nap
9. 100 years
10. Lullaby

### Solution to May's Maths Puzzle

The puzzle in May was:

**Suppose you have an analogue clock showing 3:15. What would the angle between the minute hand and the hour hand be?**



If we start with the clock face, we have a circle divided into 12 segments. Each segment, therefore, occupies  $30^\circ$  of the circle,  $\frac{360}{12} = 30$ . At 3 o'clock the minute hand will be perpendicular to the hour hand, the former on 12 and the latter on 3. In the following 15 minutes, the minute hand will advance by a quarter of the circle and point at the 3. The hour hand will also advance, by a quarter of its 1 hour journey, of  $30^\circ, \frac{30}{4} = 7.5$ , so the angle between the two hands will be  $7.5^\circ$ . The maths is fairly simple.

We just asked a question about the geometry of a clockface, but one that is not salient in the way we learn to tell the time. Some early clocks only have one hand. If we had stuck with that, we would probably be marking the quarter hours on the rim of the clockface, and the angle, we required, might seem more intuitive. As it is, the addition of the minute hand made a division into 5, for the intervening minutes, more useful. These then each require  $6^\circ$ , and the angle of the hour hand takes up 1.25 of these. The technology adds more accuracy, when it can. However, let's not forget that, until the coming of the railways in the 19<sup>th</sup> century, clocks were not accurate in the modern sense, to a time zone. Instead, they reflected the local time where the clock was actually positioned, according to sunrise, noon and sunset. That's a different notion of accuracy. Times change.

*C. J. Rupp, Maths for Fun Group Leader (among other responsibilities).  
maths@u3ameltonmowbray.org.uk*

**Thank you** to everyone who contributed to this month's newsletter.

**NEWSLETTER CONTRIBUTIONS:** Please send by **25<sup>th</sup>** of each month to Claire Abbott, [editor@u3ameltonmowbray.org.uk](mailto:editor@u3ameltonmowbray.org.uk). It would be much appreciated if you did **not** leave it until the last minute.